

August 1975

When coming to revise Chapter 16 I found certain discrepancies between the LSE marginals (operated by Hazel O'Hare) and ~~those by~~ the Essex marginals in relation to the numbers in different social minorities. The discrepancies are mostly very small. The worst is ~~£~~ "born in Eire" (49 compared with 62 households), ~~and~~ Low paid men (108, compared with 92), Large families (82 compared with 91) and Non-white (45 compared with 52). I believe this has arisen because the LSE totals were taken from the coding on the back inside cover of the questionnaire, whereas the Essex codings derived from patient scrutiny of different variables scattered in the questionnaire. The latter is likely to be the most accurate and I have revised tables accordingly.

The population ~~base~~ estimates have involved a second change. When first drafted, the chapter did not have the benefit of the 1971 Census results. The estimate of households in the UK came from Social Trends ^(based on 1966 Census). This proved in the light of the 1971 Census to be a gross underestimate. I have ~~adopted~~ with an estimate for Northern Ireland the ~~population~~ number of households in 1971 was 18,637,000. I have ~~estimated~~ 18,600,000 for 1969, which means that we ~~have~~ ~~been~~ ~~a little stringent~~ ~~produce slightly~~ ~~sure~~ However, as pointed out in Ch. 5 our definition of household proved out to be slightly more severe than official surveys - by a factor of 2 per cent. We were less inclined to accept separate households as joint households. For this reason I ~~have~~ put the ~~best~~ ~~estimate~~ "equivalent" figure for 1971 at 18,900,000, and the 1968-9 figure at 18,600,000. The multiplier is therefore 9086.

For individuals the multiplier is $\frac{55,640,000}{6084} = 9145$

11

I have been thinking about you a great deal lately
 and wondering how you are getting on. I hope
 you are well and happy. I have been very busy
 lately, but I will try to write to you more often.
 I have been thinking about you a great deal lately
 and wondering how you are getting on. I hope
 you are well and happy. I have been very busy
 lately, but I will try to write to you more often.
 I have been thinking about you a great deal lately
 and wondering how you are getting on. I hope
 you are well and happy. I have been very busy
 lately, but I will try to write to you more often.
 I have been thinking about you a great deal lately
 and wondering how you are getting on. I hope
 you are well and happy. I have been very busy
 lately, but I will try to write to you more often.

From Special Area Series A.

	Indiv	H'hlds	householdy			HAZER	PHIL
			under 100	100-139			Not Sample Nos. rest
1 parent	167	45	4	19	= 51	62	60 254
W Ad 3	11	3	0	2		20	18 46
4+ chil	484	67	13	29	63	82	89 632
Unem 8 wks	442	100	20	38	58	90	86 327
ill 8 wks	601	182	19	59	43	179	178 643
disabled under 65	435	147	14	56	48	203	199 591
borderline	456	128	10	41	40	38	383 1230
hard child	145	27	3	11	(52)	26	145 135
65+ bedfast/sever	38	15	0	7	-	147	145 329
low paid women	119		0	6	-	⁸⁰ less than 12	77 278
* n men	270	77	6	17	30	108	92 366
non-white	11	4	0	1	-	45	52 199
Eire	115	30	2	11	43	49	62 196
under 12		30					

in 9300

Said on p. 4 of Ch 22 that sample 1 is 9300 (in fact 1 in 9124)

8502

527,

170 153

697

Check " no households 48
1961 = 16,189
Census. 1971 = 18,187 +
= 18,637 UK

Est Northern Ireland 450,000

in rearing

71 - 9
50 - 7
122.6

68

[The page contains faint, illegible handwriting across approximately 20 horizontal lines.]

1. The first part of the document is a list of names and dates, which appears to be a record of some kind. The names are written in a cursive script, and the dates are in a standard font. The list is organized into two columns, with names on the left and dates on the right.

2. The second part of the document is a series of handwritten notes, which are written in a cursive script. These notes are organized into a list, with each item starting with a number. The notes appear to be a record of some kind, possibly a list of events or a list of items.

3. The third part of the document is a series of handwritten notes, which are written in a cursive script. These notes are organized into a list, with each item starting with a number. The notes appear to be a record of some kind, possibly a list of events or a list of items.

4. The fourth part of the document is a series of handwritten notes, which are written in a cursive script. These notes are organized into a list, with each item starting with a number. The notes appear to be a record of some kind, possibly a list of events or a list of items.

5. The fifth part of the document is a series of handwritten notes, which are written in a cursive script. These notes are organized into a list, with each item starting with a number. The notes appear to be a record of some kind, possibly a list of events or a list of items.

MINORITY CONDITION	0-99%					100-139%				
	BELFAST	GLASGOW	NEATH	SALFORD	ALL AREAS	BELFAST	GLASGOW	SALFORD	NEATH	ALL AREAS
1-PARENT FAMILY	5.9	11.1	(17.4)	26.9	15.0	4.1	5.5	3.6	3.2	4.3
WOMAN + AD. DEPS.	0.0	0.0	(0.0)	1.7	0.5	2.2	0.0	0.0	0.0	0.6
4+ CHILDREN	32.4	39.7	(0.0)	37.4	34.4	23.4	22.5	12.9	21.7	21.1
<65 UNEMP 8+ WKS	41.2	22.2	(0.0)	24.3	26.7	15.2	27.0	9.3	15.4	18.3
<65 SICK 8+ WKS	17.6	17.5	(0.0)	33.9	21.6	17.5	25.7	11.4	11.3	17.9
<65 DISAB. AD.	10.8	15.9	(0.0)	21.7	15.3	16.0	5.8	13.6	8.1	10.4
<65 BORDERLINE	15.7	9.5	(0.0)	25.2	15.6	10.8	9.0	0.0	29.0	12.9
DISAB/HANDIC. CHILD	7.8	7.1	(0.0)	16.5	9.8	3.0	5.5	7.1	11.8	6.5
>65 INCAPACITATED	0.0	0.0	(0.0)	0.0	0.0	2.2	0.0	2.1	0.9	1.2
LOW PAID WOMAN <£8	0.0	0.0	(0.0)	3.5	1.1	4.8	8.4	0.0	3.2	4.9
LOW PAID MAN <£14	21.6	2.4	(0.0)	7.8	9.3	11.5	6.4	2.9	16.7	9.8
NON-WHITE	0.0	0.0	(0.0)	0.0	0.0	0.0	0.0	0.0	0.9	0.2
EIRE	0.0	0.0	(0.0)	13.9	4.3	4.1	0.0	0.0	11.3	3.8
No. of Min. Conds.										

	0-99%					100-139%				
	HOUSEHOLDS									
1-PARENT FAMILY	(2.4)	1.8	(0.0)	(14.8)	2.6	3.5	6.7	(4.4)	9.1	6.1
WOMAN + AD. DEPS	(0.0)	0.0	(0.0)	(0.0)	0.0	2.3	0.0	(0.0)	0.0	0.6
4+ CHILDREN	(12.2)	7.3	(0.0)	(9.5)	8.5	9.3	8.7	(6.7)	11.7	9.3
<65 UNEMP 8+ WKS	(17.1)	16.4	(0.0)	(9.5)	13.1	12.8	13.5	(8.9)	11.7	12.2
<65 SICK 8+ WKS	(17.1)	12.7	(13.3)	(7.1)	12.4	18.6	17.3	(8.9)	27.3	18.9
<65 DISAB. AD.	(14.6)	9.1	(6.7)	(4.8)	9.2	19.8	13.5	(15.6)	23.4	17.9
<65 BORDERLINE	(4.9)	10.9	(0.0)	(4.8)	6.5	11.6	8.7	(2.2)	27.3	13.1
DISAB/HANDIC. CHILD	(0.0)	1.8	(6.7)	(2.4)	2.0	2.3	1.9	(2.2)	7.8	3.5
>65 INCAPACITATED	(0.0)	0.0	(0.0)	(0.0)	0.0	4.7	1.0	(2.2)	1.3	2.2
LOW PAID WOMAN <£8	(0.0)	0.0	(0.0)	(0.0)	0.0	3.5	1.0	(0.0)	2.6	1.9
LOW PAID MAN <£12	(9.8)	3.6	(0.0)	(0.0)	3.9	5.8	3.8	(2.2)	9.1	5.4
NON-WHITE	(2.4)	0.0	(0.0)	(2.4)	1.3	0.0	0.0	(0.0)	1.3	
EIRE	(2.4)	0.0	(0.0)	(2.4)	1.3					

Source: SPECIAL AREAS SERIES A

This seems to be wrong - Now checked Aug 1978

[illegible]

July 75

Decided not to change to individuals

TABLE 11/3

Per cent of households belonging to certain social minorities with relatively
low incomes or incomes below or just above the social standard

See Table 19

Household characteristic	Per cent with low income (i)	Per cent with income below (under 100 per cent) or just above (100-139 per cent) the social or government standard		Per cent with income last year below the deprivation standard		Total numbers (iii)
		Income last year (ii)	Income last year and/or last week			
		Individs	Individs			
One parent family	73	44 [17]	46 19	51	37 26	54
Woman and adult dependants	(64)	(28) [0]	27 0	(50)	21 20	14
Large family (4 or more children)	53	51 [17]	50 18	60	45 33	69
Unemployed 8 weeks or more (under 65)	49	28 [8]	31 11	34	26 18.5	74
Sick or injured 8 weeks or more (under 65)	44	31 [6]	31 6	37	25 22	144
Disabled adult (under 65)	46	37 [7]	33 4	41	30 23	177
Borderline disabled (under 65)	45	26 [7]	26 8	31	21 16	328
Disabled or handicapped child	(63)	(47) [26]	57 25	(47)	47 31 (82)	19
Elderly incapacitated (over 65)	64	61 [14]	48 13	68	53 40	129
Low-paid women (under £8 per week)	45	30 [11]	31 12	30	30 20	64
Low-paid men (under £14 per week)	58	37 [12]	40 13	44	39 33	81
Non-white	(36)	(33) [6]	34 7	(33)	27 19	33
Born in Eire	(39)	(22) [5]	20 2	(32)	18 14	41
At least one characteristic	50	34 [9]		40	26	857
None of above characteristics	31	28 [5]	21 [2.4]	32	17 10	911
All	40	31 [7]	28	36	21 15.5	1,768

Elderly disabled

64 [14]

TR

Note: (i) Defined as having less than 80 per cent of the mean of households of their type (man 60 or over; man under 60; woman under 60; man and woman; man, woman and 1 child; 2 children; 3 children; 4 or more children; others with children. Each social minority was distributed among at least three, and sometimes all 14, of these 14 household types.

(ii) The figures in square brackets are those under 100 who are included.

(iii) These numbers apply to the first two columns but are slightly lower (totalling 1,634) for the final column.

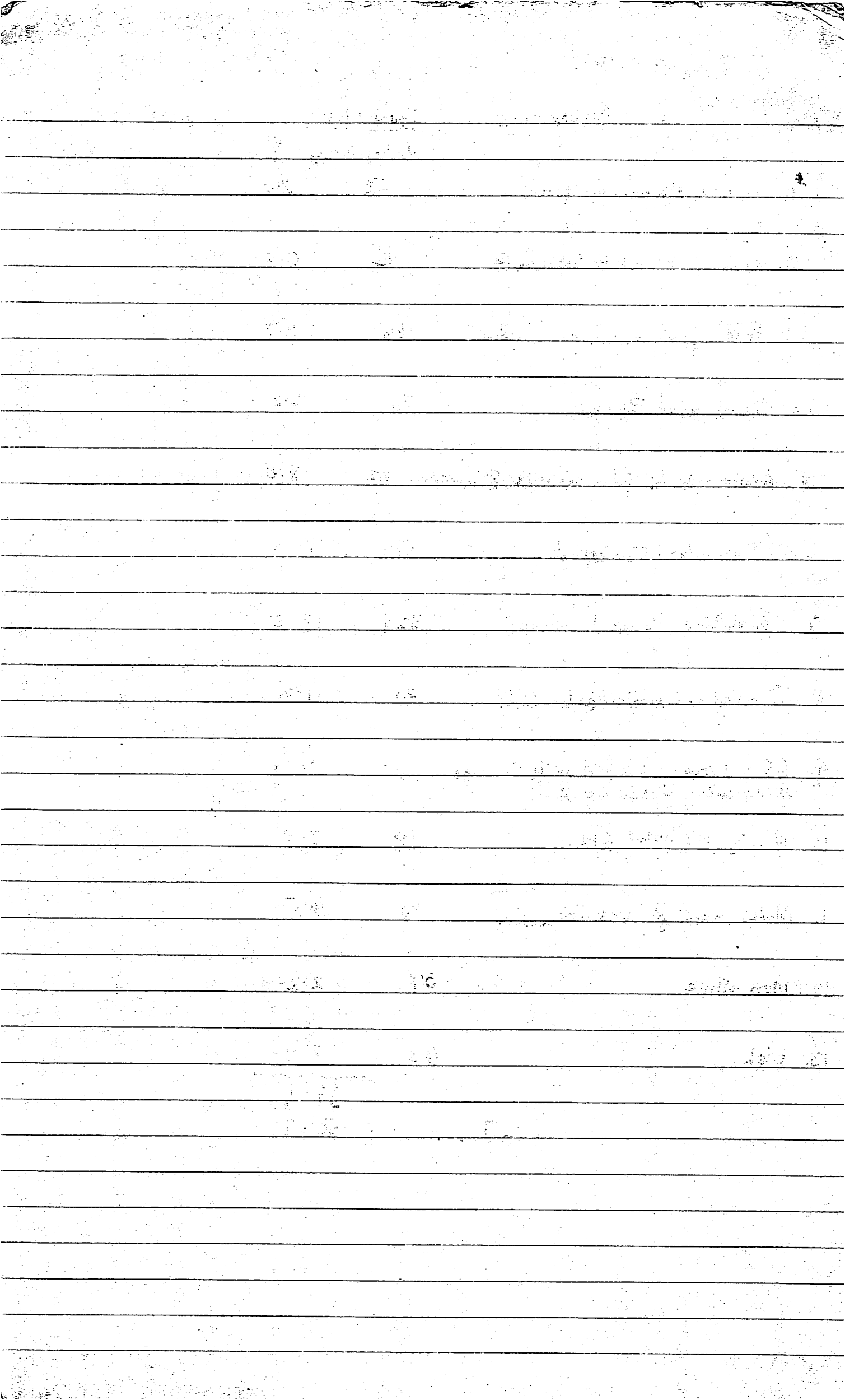
Source: Social Minority series. Deprivation standard figures to be revised.

MINORITIES.

Count 1780

Nos households %

1. Child with non-res. parent.	53	3.0
2. Woman with adult dependants	14	0.8
3. Four or more dependent children	66	3.7
4. Unemployed 8 weeks	74	4.2
5. Adult under 65 ill or injured 8 weeks	142	8.0
6. Adult under 65 disabled	179	10.1
7. Borderline disabled under 65	329	18.5
8. Disabled or handicapped child	21	1.2
9. 65 and over bedfast or ill 8 weeks or otherwise incapacitated	125	7.0
10. Earning less than £12.	68	3.8
11. Males earning less than £14	80	4.5
12. Non-white	39	2.2
13. Irish	43	2.4
		<hr/>
		69.4
-7	=	50.9



CHAPTER II

To add

List of queries & requests for tables sent to Hazel.

1. Add section showing rel. deprivation standard as applied to social minorities.
2. Add illustrations from questionnaires for
 (a) membership certain minorities (b) membership
 2 or more minorities (and the extreme case?)
3. Discuss some of the minorities (not those which are to be the subject of ~~the~~ subsequent chapters) in turn esp. hand chil, using Hazel's cross-table and household type summary from 2/22 and household type in 1 group from special series produced by Hazel.

Small amount of water in the tank.

Large amount of water in the tank.

Small amount of water in the tank.

Large amount of water in the tank.

Small amount of water in the tank.

Large amount of water in the tank.

Small amount of water in the tank.

Large amount of water in the tank.

Small amount of water in the tank.

Large amount of water in the tank.

Small amount of water in the tank.

Large amount of water in the tank.

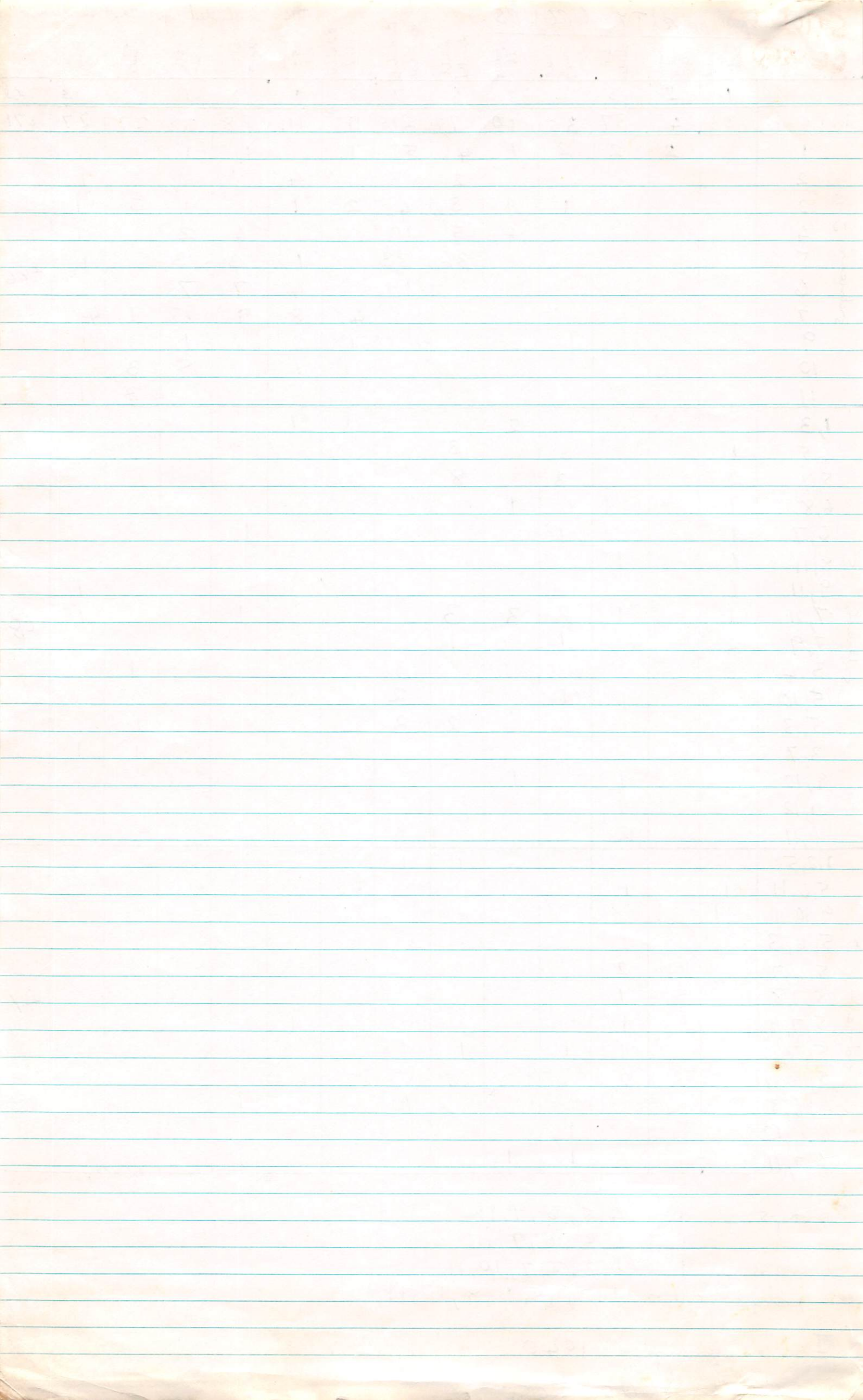
STILL TO BE USED MINORITY GROUPS

	1	2	3	4	5	6	7	8	9	10	11	12	13	Total
In 1 group:	23	4	37	35	40	77	215	9	111	28	38	27	27	671
1		2	2	2	1	4	5	1		1	1	1	1	
2						2	3		4				1	
3				1	1	3	4	2	1		1	3	1	
4					4	5	10		1	4	2		1	
5						36	33		1	3	3	1	1	246
6							19		4	7	7			
7								4	8	9	13	1	4	
9								1			1		1	
10								1	1		5	3		
11												3	1	
1,3					2			1	1					
4,5	1					3								
5,7	2			3		8								
6,8	1				1									
6,7	1			1						1				
8,11	1		1											
9,11	1												1	
7,11	1		1	2	3	3				1			1	68
7,9	2			1		1								
3,4							3					1		
5,10			1	1			2							
5,13			1			2	2					1		
3,7								1				1	1	
9,10			1		1									
11,12			1											
6,11			2											
1,2,5						1	1							
5,6,11	1		1											
9,10,11	1													
5,6,13			1											
5,6,7			2											
5,7,8			1											
5,7,11			1						1					
5,7,10			1	1		1								
5,10,11			2											
4,6,9							1			1				
6,11,12				1										
6,7,11				1	1									

5 groups: 1 in 4,5,6,9,11
 1 in 4,5,6,7,11
 6 groups: 1 in 1,3,5,7,10,11
 8 groups: 1 in 1,3,4,5,6,8,10,11

In no group: 1040

Total households 2050



STILL TO BE USED

Number of Households in Different Social Minorities, according to Household Type I (and number below 80% of mean for type)

	One parent	Woman + Deps.	4 or more children	Unempl. 8 weeks or more	sick 8 weeks or more	under 65 disabled	under 65 disabled	under 65 borderline disabled	Disabled or handicapped child	No female earner £14	No male earner £14	Non white	Eire	over 65 ill or dis		
Man 60+				0	1	0	2	0	2	1	4		1	1	4	37
Man under 60				3	1	3	3	1	6	1	6	4	4	2	4	55
Woman 60+				0	1	0	15	3	6	3	4		1	0	1	190
Woman under 60				1	0	4	2	7	5	13	5		1	1	1	57
Man & Woman		4	2	15	7	45	17	68	33	105	52		15	5	19	472
Man, woman, 1 child	3	1		4	3	2	1	2	0	18	9	1	0	4	0	134
2 children	3	2		5	3	10	5	3	2	19	6	7	3	3	2	172
3 children	0	0		1	0	5	2	3	3	10	2	1	1	3	1	78
4 or more ch.	1	1	40	28	5	5	5	5	3	2	9	8	2	2	0	48
Three adults	4	3	1	0	15	7	20	11	25	13	58	25	1	1	10	186
Three adults, plus child	8	6	10	3	6	3	18	10	12	6	31	18	3	2	7	126
Four adults	3	3			7	4	10	1	16	4	19	4		6	1	62
Others without children	1	8	6		6	2	7	4	10	7	14	7		6	3	66
Others with children	29	1	18	5	6	1	13	3	8	2	18	7	4	3	4	85
Total	52	14	9	68	36	74	36	144	64	177	81	328	148	19	12	1768
Total in sample	62	20	82	90	179	203	385	26	80	108	45	49	47	33	12	

1224 610 AM

73.1 (64.3) 53.0 48.7 44.45 45.8 45.1 (63.2) 45.3 58.0 (36.4) (39.0) 63.6 (40)

[Source: Old Table 2/12]

Households belonging to numbers minority groups

	1	2	3	4	5	All 1-5	X
1. One-parent families	9	10	3		1	23	1.9
2. Woman and adult dep.	4	7				11	0.8
3. Large families	25	8	4	1	1	39	3.2
4. Unemployed	26	14	2	1	1	44	3.6
5. Sick/injured	35	31	8	2	1	77	6.2
6. Disabled	66	66	6	2	1	121	9.8
7. Sick/disabled child	8	5	2			15	1.2
8. Incap. adult 65+	62	9	3			74	6.0
9. Low-paid woman	28	13	2			43	3.5
10. Low-paid man	24	19	5	1		50	4.0
11. Non-white	22	6				28	2.3
12. Eire	19	8	3	1		31	2.5
Minority	328	176	39	8	5	556	-
Households	328	88	13	2	1	432	34.8
Minority Households							
All Households	3					1238	400

31.1.69.

Уч. номер	1	2	3	4	5	6	7
Уч. номер	338	88	13	8	1	338	8.8
Уч. номер	338	110	30	8	2	338	-
13. 11.80	10	8	2	1		33	3.2
11. 11.80	32	8				33	3.2
10. 11.80	34	10	2	1		30	0.0
8. 11.80	38	12	3			33	3.2
6. 11.80	35	8	3			34	0.0
4. 11.80	9	2	3			32	3.1
2. 11.80	30	30	2	3	1	33	0.8
1. 11.80	32	10	8	3	1	34	3.2
12. 11.80	30	10	3	1	1	34	3.2
11. 11.80	32	8	1	1	1	30	3.2
10. 11.80	4	1				11	0.0
9. 11.80	6	10	2		1	32	0.1
	1	5	2	4	2	34	3

Уч. номер

Households belonging to nos. minority groups

	1	2	3	4	5	AM	%
1 One-parent families	9	10	3		1	23	1.9
2 Woman & adult dep.	4	7				11	0.8
3 Large fams	25	8	4	1	1	39	3.2
4 Unemployed	26	14	2	1	1	44	3.6
5 Sick/injured	35	31 34	8	2	1	77	6.2
6 Disabled	66	46	40 39	2	1	121	9.8
7 Sick/dis child	8	5	2			15	1.2
8 Incap. adult 65+	62	9	3			74	6.0
9 Low-paid woman	28	13	2			43	3.5
10 Low-paid man	24	19	6	1		50	4.0
11 Non-white	22	6				28	2.3
12 Eire	19	8	3	1		31	2.5
Minority Households	328	176	39	8	5	556	-
All households	328	88	13	2	1	432	34.8
						1238	100

31-1-69

Handwritten header text at the top of the page, possibly a title or date.

1	2	3	4	5	6	7	8	9	10	11	12	13	14	15	16	17	18	19	20	21	22	23	24	25	26	27	28	29	30	31	32	33	34	35	36	37	38	39	40	41	42	43	44	45	46	47	48	49	50	51	52	53	54	55	56	57	58	59	60	61	62	63	64	65	66	67	68	69	70	71	72	73	74	75	76	77	78	79	80	81	82	83	84	85	86	87	88	89	90	91	92	93	94	95	96	97	98	99	100
1	2	3	4	5	6	7	8	9	10	11	12	13	14	15	16	17	18	19	20	21	22	23	24	25	26	27	28	29	30	31	32	33	34	35	36	37	38	39	40	41	42	43	44	45	46	47	48	49	50	51	52	53	54	55	56	57	58	59	60	61	62	63	64	65	66	67	68	69	70	71	72	73	74	75	76	77	78	79	80	81	82	83	84	85	86	87	88	89	90	91	92	93	94	95	96	97	98	99	100

Handwritten text at the bottom of the page, possibly a signature or date.



Population.

Nos in Sample

One parent family	260	4.3	2,393,000
Woman and adult dependants	50	0.8	445,000
Large family (4 or more children)	580	9.5	5,285,
Unemployed 8 weeks or more (under 65)	415	6.8	3,785
Sick or injured 8 weeks or more (under 65)	722	11.8	6,567
Disabled adult (under 65)	639	10.5	5,842
Borderline disabled (under 65)	1262	20.7	11,8520,
Disabled or handicapped child	149	2.4	1,334
Elderly incapacitated (over 65)	336	5.5	3,060
Low-paid woman (under £8 pw)	375	6.1	3,393
Low-paid man (under £14 pw)	602	9.9	5,520
Non-white	181	3.0	1,669
Born	164	2.7	1,501
	<u>5735</u>		<u>52,314</u>
One or more of characteristics	3272	53.6	29,820
None of above characteristics	2826	46.4	24,150,000
	<u>8561</u>		

without Borderline

55640
29820
25820

1942
 2/10/42

00,385	8.4	00	On front porch
00,384	8.0	00	On front porch
383	7.9	00	(On front porch)
382	7.8	00	(On front porch)
381	7.7	00	(On front porch)
380	7.6	00	(On front porch)
379	7.5	00	(On front porch)
378	7.4	00	(On front porch)
377	7.3	00	(On front porch)
376	7.2	00	(On front porch)
375	7.1	00	(On front porch)
374	7.0	00	(On front porch)
373	6.9	00	(On front porch)
372	6.8	00	(On front porch)
371	6.7	00	(On front porch)
370	6.6	00	(On front porch)
369	6.5	00	(On front porch)
368	6.4	00	(On front porch)
367	6.3	00	(On front porch)
366	6.2	00	(On front porch)
365	6.1	00	(On front porch)
364	6.0	00	(On front porch)
363	5.9	00	(On front porch)
362	5.8	00	(On front porch)
361	5.7	00	(On front porch)
360	5.6	00	(On front porch)
359	5.5	00	(On front porch)
358	5.4	00	(On front porch)
357	5.3	00	(On front porch)
356	5.2	00	(On front porch)
355	5.1	00	(On front porch)
354	5.0	00	(On front porch)
353	4.9	00	(On front porch)
352	4.8	00	(On front porch)
351	4.7	00	(On front porch)
350	4.6	00	(On front porch)
349	4.5	00	(On front porch)
348	4.4	00	(On front porch)
347	4.3	00	(On front porch)
346	4.2	00	(On front porch)
345	4.1	00	(On front porch)
344	4.0	00	(On front porch)
343	3.9	00	(On front porch)
342	3.8	00	(On front porch)
341	3.7	00	(On front porch)
340	3.6	00	(On front porch)
339	3.5	00	(On front porch)
338	3.4	00	(On front porch)
337	3.3	00	(On front porch)
336	3.2	00	(On front porch)
335	3.1	00	(On front porch)
334	3.0	00	(On front porch)
333	2.9	00	(On front porch)
332	2.8	00	(On front porch)
331	2.7	00	(On front porch)
330	2.6	00	(On front porch)
329	2.5	00	(On front porch)
328	2.4	00	(On front porch)
327	2.3	00	(On front porch)
326	2.2	00	(On front porch)
325	2.1	00	(On front porch)
324	2.0	00	(On front porch)
323	1.9	00	(On front porch)
322	1.8	00	(On front porch)
321	1.7	00	(On front porch)
320	1.6	00	(On front porch)
319	1.5	00	(On front porch)
318	1.4	00	(On front porch)
317	1.3	00	(On front porch)
316	1.2	00	(On front porch)
315	1.1	00	(On front porch)
314	1.0	00	(On front porch)
313	0.9	00	(On front porch)
312	0.8	00	(On front porch)
311	0.7	00	(On front porch)
310	0.6	00	(On front porch)
309	0.5	00	(On front porch)
308	0.4	00	(On front porch)
307	0.3	00	(On front porch)
306	0.2	00	(On front porch)
305	0.1	00	(On front porch)
304	0.0	00	(On front porch)

00,385
 00,384
 00,383

Table 2

Percent of households in poverty and on the margin of poverty according to membership of social minorities

Household characteristic	Per cent of households with income last year		Per cent of households with income last year		Per cent of households with income last year		Per cent of households with income last year		Per cent of households with income last year	
	lower than supplementary benefit allowances	higher than supplementary benefit allowances but less than 40% higher	lower than supplementary benefit allowances	higher than supplementary benefit allowances but less than 40% higher	lower than supplementary benefit allowances	higher than supplementary benefit allowances but less than 40% higher	lower than supplementary benefit allowances	higher than supplementary benefit allowances but less than 40% higher	lower than supplementary benefit allowances	higher than supplementary benefit allowances but less than 40% higher
One parent family	7.3	7.4	9	38	11.2	3.5	15	4.8	54	9
Woman and adult dependants	0.0	0	12	0	0	0.9	4	0.8	14	1
Large family (4 or more child.)	9.7	9.8	12	78	24.9	5.4	23	12.6	16	20
Unemployed 8 weeks or more (under 65)	4.8	4.9	6	25	8.0	3.5	15	5.2	67	9
Sick 8 weeks or more (under 65)	7.3	7.4	9	38	10.5	8.3	35	11.0	123	17
Disabled adult (under 65)	10.5	10.5	13	36	11.5	12.5	53	12.5	140	24
Borderline disabled (under 65)	20.2	20.2	5	25	22.7	14.4	61	15.1	170	34
Disabled or handicapped child	4.0	4.0	5	28	8.9	0.9	4	20	24	2
Elderly disabled or ill (over 65)	14.5	14.5	18	38	12.1	14.4	61	10.8	123	19
No earner with £12 per week	5.6	5.7	7	30	9.6	2.8	12	4.3	48	8
No male earner with £14 per week	8.1	8.2	10	51	16.3	4.7	20	8.4	94	18
Non-white	1.6	1.6	2	8	2.6	2.1	9	2.8	31	5
Born in Eire	1.6	1.6	2	7	2.2	1.7	7	3.1	20	3
None of above characteristics	37.1	37.1	46	73	48.3	48.7	206	49.1	119	170
Total	132.3	132.3	146	144	124.2	10	31			
Number of characteristics	164	164	124		525					
Number of households	124	124		313	423		1123			

Table 7/8

Un. ...
Sick same
disad. ...
disad higher
dis ch same
GSE ...
EIRE same.

A

Table 1

Weekly not used

Percent of households in the U.K and in ~~the~~ four areas belonging to certain social minorities, and percent of these minorities with low income or in poverty

Household characteristic		U.K	Four areas	Per cent with less than 80 per cent of mean income [†]	Per cent with income less than basic SB allowance	% with less than SB + 40%	
One parent family	3.0	4.4	73	17 18	44 42		
Woman and adult dependants	0.8	1.0	0.4	(64)	(0) (7)	(28) (21)	
Large family (4 or more child.)	3.9	4.0	5.4	53	17 (15)	51 (44)	
Man Unemployed 8 weeks or more (under 65)	4.2	4.4	8.7	49	8 6	28 25	
Sick 8 weeks or more (under 65)	8.1	8.7	15.6	44	6 10	31 33	
Disabled (under 65)		9.9	12.5	46	7 6	37 36	
Borderline disabled (under 65)	18.5	18.8	11.3	45	7 5	26 25	
Disabled or handicapped child	1.2	1.3	2.4	(63)	(26) (14)	(47) (43)	
Elderly disabled or ill (2 or over 65)	7.1	7.2	-	64	14 12	61 59	
No earner with £12 per week	3.6	3.9	3.2	45	11 11	30 24	
No male earner with £14 per week	4.6	5.3	6.5	58	12 11	37 42	
Non-white		2.2	0.3	(36)	(6) (5)	(33) (24)	
Born in Eire		2.4	2.7	(39)	(5) (12)	(22) (28)	
None of above characteristics		46%	?	25?	5 2 (6)	28 (28)	
Total		100	100	40	7 7	31	
		2050	1208				

[†] Defined as having less than 80 per cent of the mean of households in which they of their type (man 60 or over; man under 60; woman 60 or over; woman under 60; man & woman; man, woman & 1 child; 2 children; 3 children; 4 or more children; 3 adults; 3 adults plus children; 4 adults; others without children; others with children). Households were distributed Each social minority was distributed among at least three of these (household types) and most minorities.

Source: Tab 7/4 (weekly), 7/8, 7/16

Handwritten notes in a box: "Background papers", "Background for reform", "Background for reform".

Handwritten notes: "Food for security", "Main", "Sp Areas", "Cure to population".

Handwritten notes: "Food for security", "Social Security", "Food for security".

Handwritten notes: "Total No. of individuals", "Individuals", "6098", "1802", "7900".

Handwritten notes: "Minority Groups", "Special", "People".

	88%	Main	Special	People
One parent	54	62 (3.0)	54 (4.47)	260 4.2
Woman + depe	14	20 (1.0)	5 (4.04)	50 2.5
4 chil +	69	82 (4.0)	65 (5.4)	580 7.0
Unemp	74	90 (4.4)	105 8.7	415 4.5
Chronic sick under 65	144	179 (8.7)	189 15.6	722 4.0
Disabled under 65	177	203 (9.9)	151 12.52	639 3.1
Borderline under 65	328	385 (18.8)	136 11.3	-1262 ^{10.7} 3.3
Dep or h. child	19	26 (1.3)	29 2.4	149 6.0
65+ disabled or ill	129	147 (7.2)	(15)	336 2.3
No earner ^{Female}	64	80 (3.9)	39 3.2	375 4.7
Male under £14	81	108 (5.3)	78 (6.5)	602 ⁶ 5.6
Non white	33	45 (2.2)	4 0.3	181 4.0
Tire	41	49 (2.4)	33 2.7	164 3.3

Handwritten notes: "1208", "household".

Handwritten note: "6098".



1	84	587	587	587
2	313	546 = 505	546 = 505	546 = 505
3	54			
4	73			
5	63			
6	1047	1222 = 1129	1222 = 1129	1222 = 1129
	1634	1768	1768	1768
	1047			
	587			

Handwritten notes: "conflict reaction", "self-immolating", "Salvage pride".

Handwritten note: "293".

Handwritten notes: "911", "271".

Handwritten notes: "1634", "546", "192".

1994

	Percent with low income	Percent with income last year in relation to social standard		Percent with income last year and/or last week below or just above the social standard	Total number
		below (under 100%)	just above (100%-139%)		
One parent family	73	17		51	
Woman and adult dependants	(64)	0		(50)	
Large family (4 or more children)	53	17		60	
Unemployed 8 weeks or more (under 65)	49	8		34	
Sick or injured 8 weeks or more (under 65)	44	6		37	
Disabled adult (under 65)	46	7		41	
Borderline disabled (under 65)	45	7		31	
Disabled or handicapped child	(63)	(26)		(47)	
Elderly incapacitated (over 65)	64	14		68	
Low-paid woman (under £8 pw)	45	11		30	
Low-paid man (under £14 pw)	58	12		44	
Non-white	(36)	(6)		(33)	
Born in Eire	(39)	(5)		(32)	
None of above characteristics	25?	5		32	
Total All	40	7		36	

[illegible]

(3)

~~Fourteen~~ Thirteen minorities were distinguished and defined for special study in the survey. Sometimes, ~~for example, large families,~~ ^{example, large families,} they could be defined easily for identification. ~~Sometimes, for example,~~ ^{rather complex,} operational definitions had to be developed, ~~for example,~~ ^{for example,} ~~the disabled,~~ ^{the disabled,} ~~one parent families or households consisting of~~ a woman and adult dependants, ~~rather complex operational definitions~~ had to be developed. The thirteen minorities are listed in Table 1, which shows that Altogether, they account for ^{49.3 per cent of the household} 53.6 per cent of the population in the sample. ^{minority is composed of} The largest ~~are~~ ^{and} households in which there is a disabled adult aged under 65. The smallest of households ~~where~~ in which there are women and adult dependants. As would be expected, the proportions ^{within each of most of} of ~~these~~ ^{of these} minorities with relatively low incomes tend to be relatively large, ~~but the excess is~~ By the test of low income one-parent families are worst off, with ^{the} elderly disabled next in ranking. ^{extent} The ~~prevalence~~ ^{prevalence} of poverty, as measured by supplementary benefit allowances, ~~was~~ also tends to be much higher ~~among these minorities~~. One parent families, large families, the elderly disabled and families in which there is a disabled or handicapped child are particularly noteworthy, though the relatively small numbers ^{of the last mentioned in the sample} ~~(among the last group)~~ should be remembered. ~~However,~~ ^{poverty among some minorities, is not much more common}

NP

~~INSERT TABLE 1~~

However, poverty among some minorities, ~~is not~~ ^{or unemployed} for example, households in which a member of the household has been sick for 8 weeks or more in the year, and the coloured and Irish minorities, is not very much higher than in the population not falling into any of these minorities. This is discussed below.

INSERT TABLE 1

Asked from Hazel

3rd July 1971

Wanted:

households ① ~~Member~~ Not in any minority group \times ~~the~~ household income last year as % SB
 \times household type I

individuals ② DITTO

Households ③ Not in any minority group \times household income last week as % SB
 \times household type I

Industry ④ DITTO

⑤ Membership one minority group \times household income last year as % SB
showing each minority group

⑥ Membership two minorities (showing combinations) \times % household income last
year as % SB (just under 100, 100-140, 140+) and total.

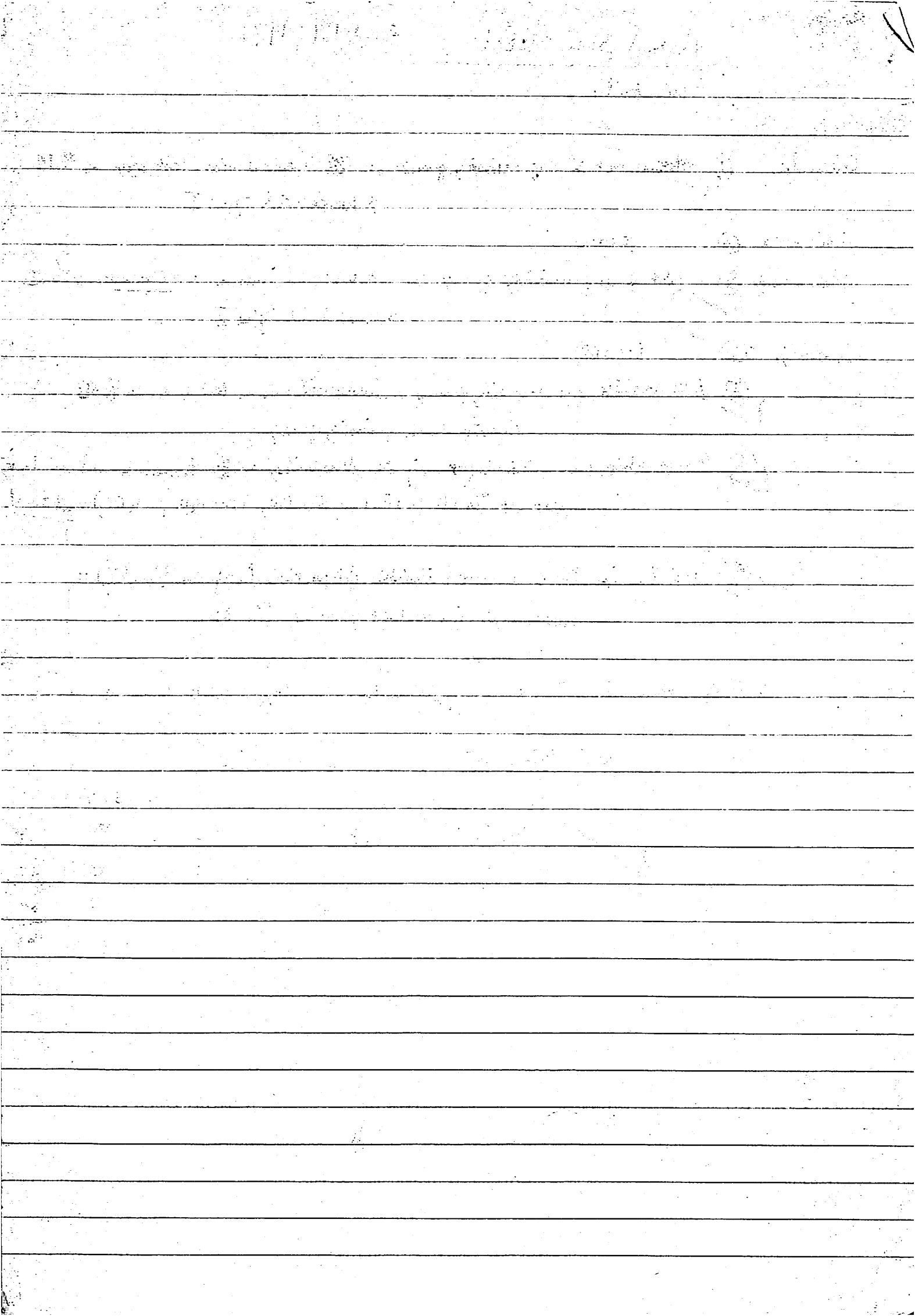
⑦ Membership three or more minorities (if possible listing combinations) \times
household income last year as % SB.

Also asked for Table n[?] ~~Mean~~ tax liability \times gross income

and life insurance - Surrender value.

~~and~~ One p. form list.

1	327	
2	88	88
3	13	39
	7	35
	435 +	162



MINORITY GROUPS.

NB "Don't know" has been included in the "not in group" category.

1 group	1	2	3	4	5	6	7	8	9	10	11	12	Total
2	28	7	41	4	73	96	13	119	37	51	28	31	569
3	2												
4	2												
5	3												
6	5												
7	1												
8		6											
9	1												
10	2		2	2	6	10		1	6				
11	1		4		1				3				
12	1	1	2	1	3			1	1	3			

175

25	1												
3,5	2												
3,7	1												
3,8	1												
4,5	1												
4,11													
5,6		1	2	3									
5,7			1										
5,9			1	2									
5,10			1										
5,12			1										
6,7	1				1								
6,8					1								
6,9					1								
6,10				1	3								
6,12					2								
7,10	1		1										
8,9					1								
8,10	1				1								
9,10			1										
9,11			1										
10,11			1										
10,12													
11,12					1								

38

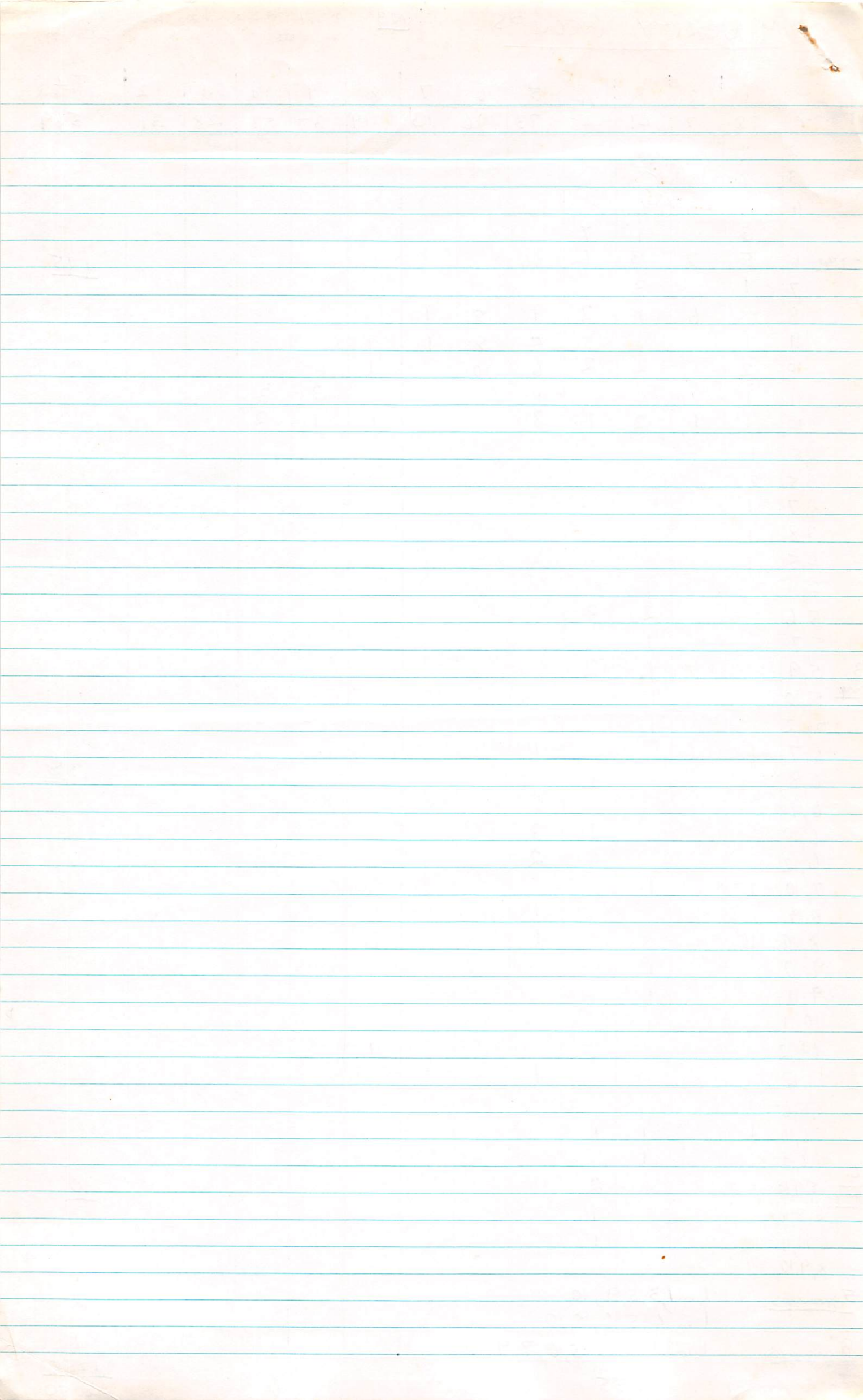
2,5,6	1												
5,6,10	1												
5,6,12			1										
5,9,10				2									
6,8,10				1									
6,10,11				1									
8,9,10	1												

10

1 in 3,5,9,10													
1 in 4,5,6,8,10													
1 in 1,3,4,5,6,7,9,10													

2

In no group: 1255
2050



	Minority group											Total in 1 group: 328
1 group only:	Dependent child, parent not resident 1	Woman & adult dependent 2	Former dependent children 3	Adult unemployed 8 weeks 4	Adult sick or injured 8 weeks 5	Disabled adult under 65 6	Disabled or sick children 7	Incapacitated adult over 65 8	Woman earning under £8 9	Man earning under £14 10	Non-white 11	
	9	4	25	26	35	66	8	62	28	24	22	19
2 groups												
3	1	-	-	-	-	-	-	-	-	-	-	-
4	1	-	1	-	-	-	-	-	-	-	-	-
5	1	-	-	3	-	-	-	-	-	-	-	-
6	6	1	1	5	20	-	-	-	-	-	-	-
7	-	-	3	-	1	-	-	-	-	-	-	-
8	-	4	-	-	-	3	-	-	-	-	-	-
9	1	-	-	2	1	4	1	-	-	-	-	-
10	-	1	1	1	2	6	-	1	2	-	-	-
11	-	-	1	-	1	-	-	-	1	3	-	-
12	-	1	-	1	2	-	-	1	1	2	-	-
												Total in 2 groups: 88
3 groups												
5+6	-	-	1	1	-	-	-	-	-	-	-	-
3+1	1	-	-	-	-	-	-	-	-	-	-	-
6+9	-	-	-	-	1	-	-	-	-	-	-	-
8+9	-	-	-	-	1	-	-	-	-	-	-	-
5+10	-	-	1	-	-	-	-	-	-	-	-	-
6+10	-	-	-	1	1	-	-	-	-	-	-	-
7+10	1	-	-	-	-	-	-	-	-	-	-	-
8+10	1	-	-	-	-	-	-	-	-	-	-	-
5+12	-	-	1	-	-	-	-	-	-	-	-	-
6+12	-	-	-	-	1	-	-	-	-	-	-	-
10+12	-	-	-	-	-	-	-	1	-	-	-	-
												Total in 3 groups: 13

4 groups

1 in groups 3, 5, 6, 12

1 in groups 4, 5, 6, 10

5 groups

1 in groups 1, 3, 4, 5, 6

In no groups: 806.
Total households 1238

Minority groups

No. of minority
groups household
falls into (excluding
borderline disabled)

No
of
households

%
of
households.

None

805

65 %

1

329

27 %

2

88

7 %

3

13

1 %

4

2

0 %

5

1

0 %

Total no. of households: 1,238